



**SUN VALLEY
ECONOMIC
DEVELOPMENT**

SVED 1Q Members Forum

Ketchum Events Center

January 20, 2016

SVED Projects Update

SVED 2015 Performance Overview

- Awarded \$3.5 m in Idaho Tax Reimbursement Incentives for potential 250+ new jobs
- Successful collaboration on incubator activities with KIC
- Instrumental in 3+ start-up relocations
- Innovation project portfolio poised to deliver

Applicant	Business	FT Jobs (#)	Award (\$m)
Limelight	Hotel	57	\$0.1
Auberge	Hotel	109	\$0.2
Solu	Software	88	\$3.2



SVED 2016 Projects

1. Increase Local Housing Opportunities

2. Increase Local Investment

3. Support Improved Tourism Capabilities

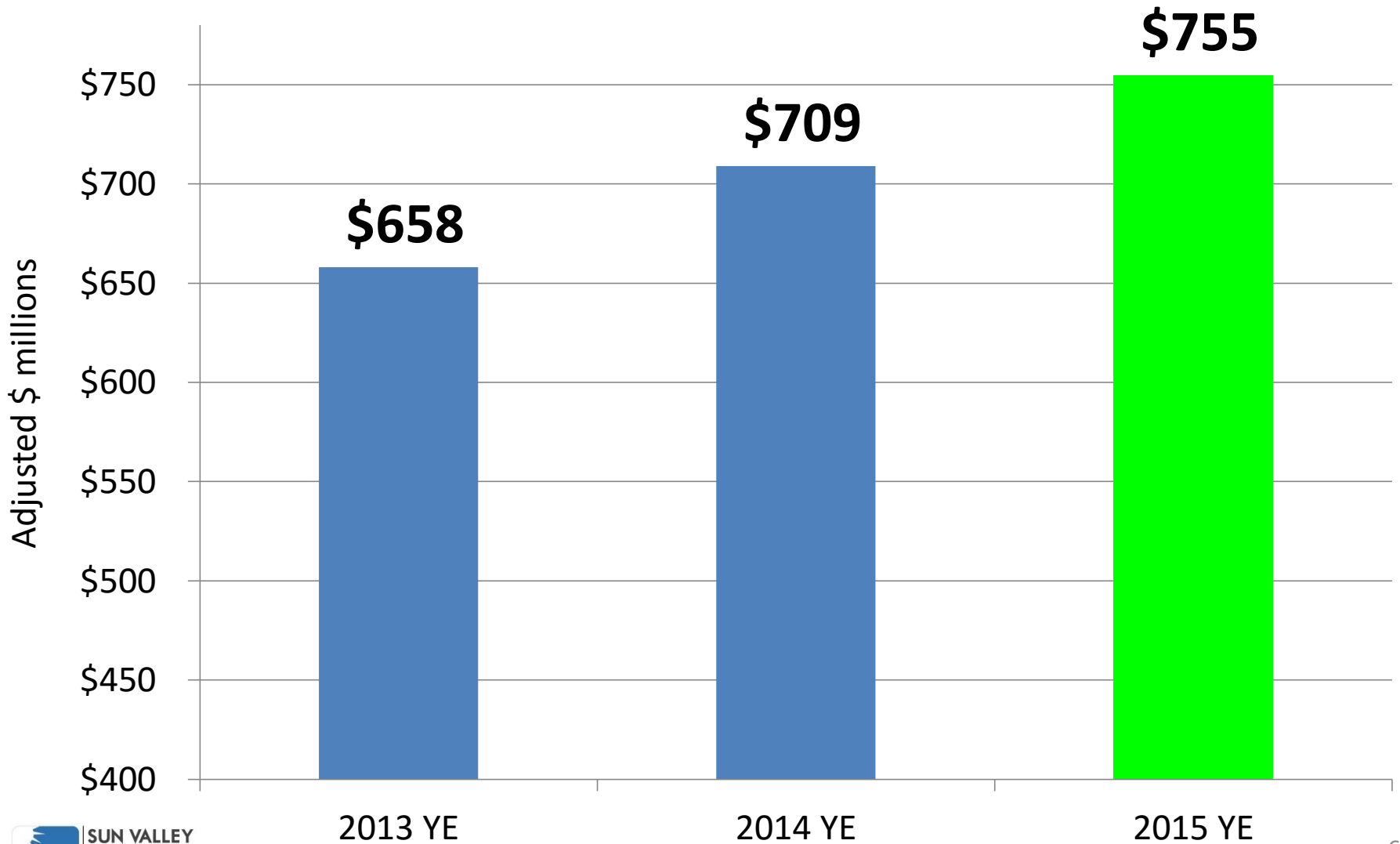
4. Prepare Community Economic Reports

5. Pursue High-Potential Innovation Projects

Blaine Co Economy Update

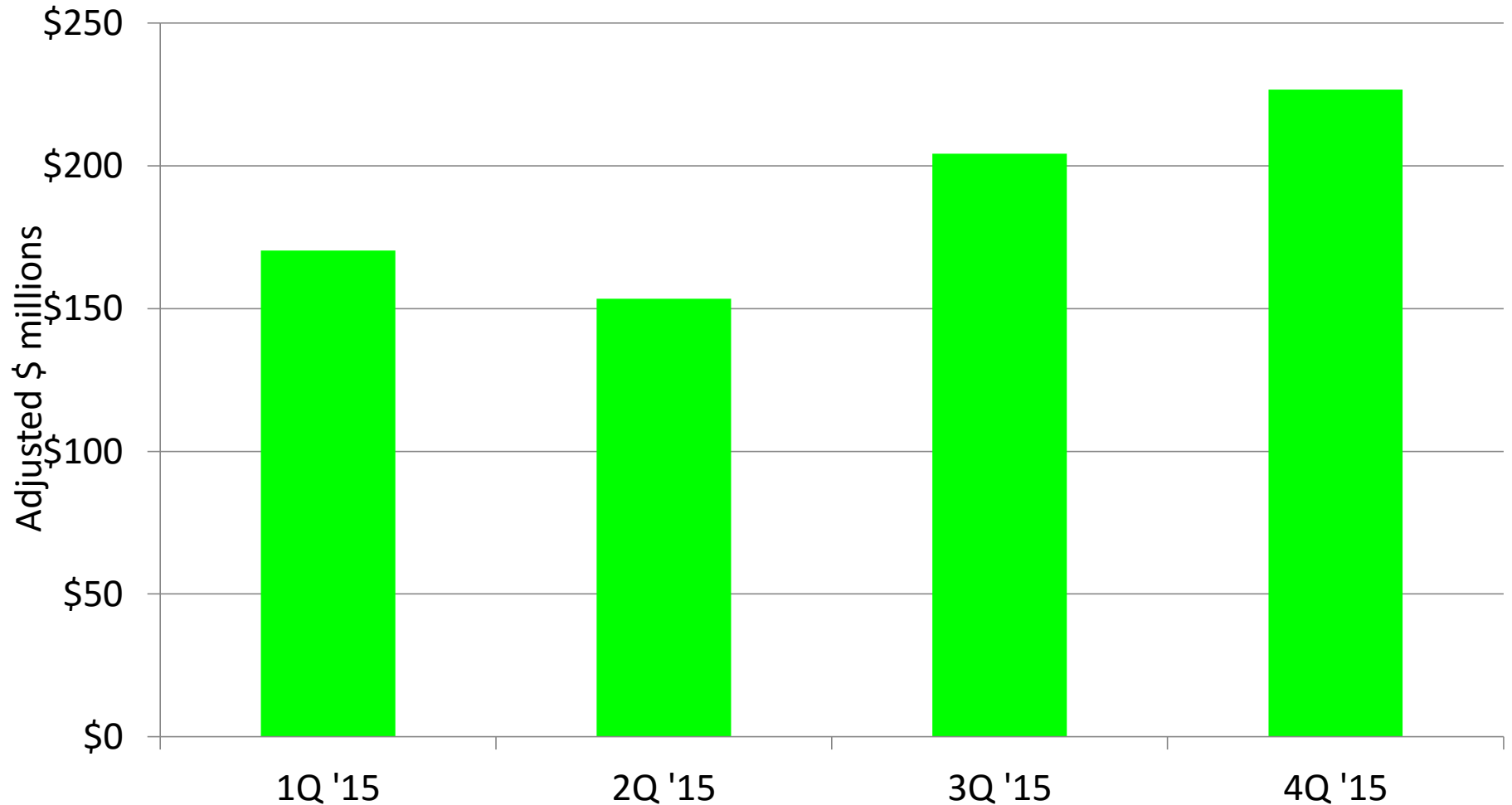
Blaine Co Sales – YE 2015

Reported Sales (\$m)

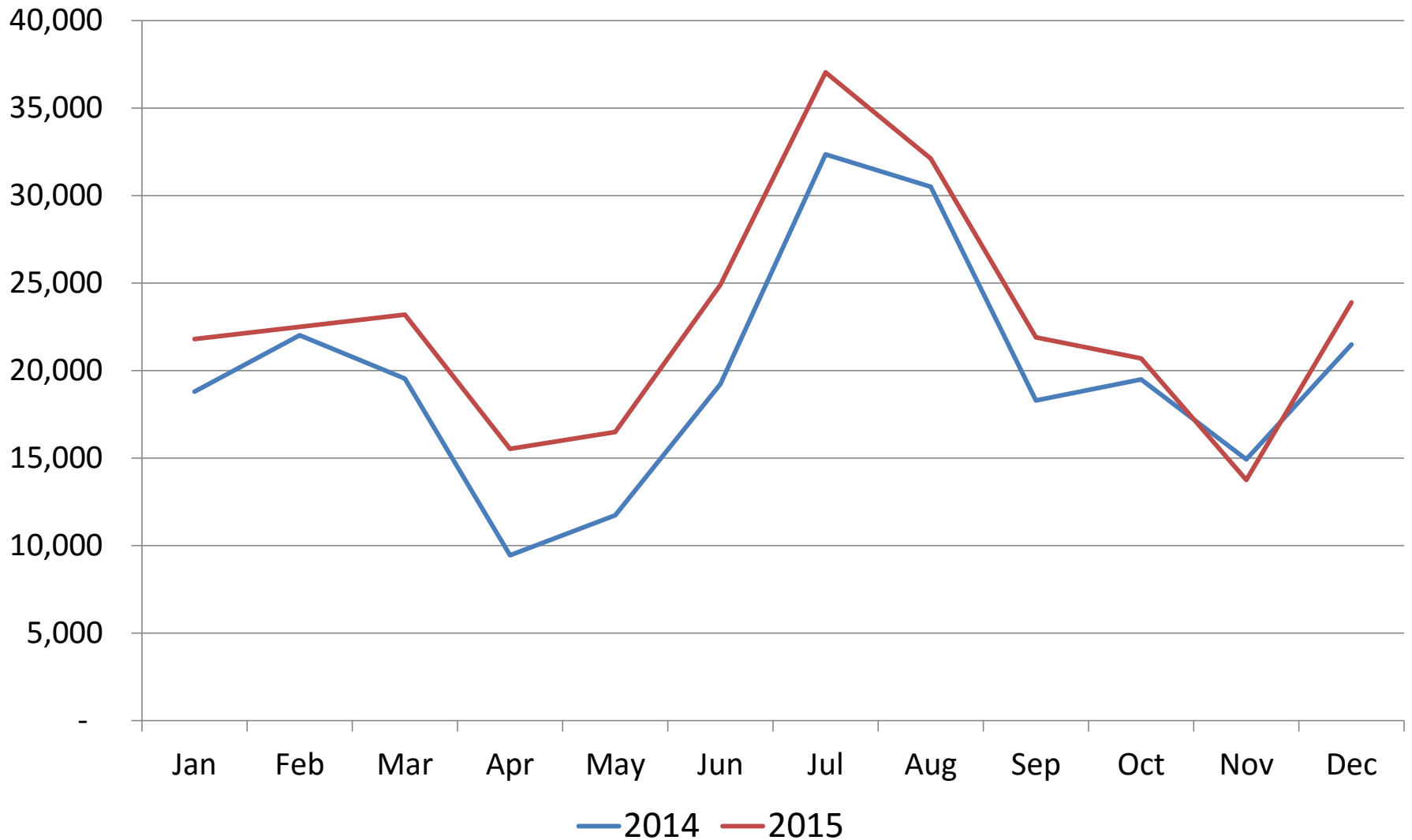


Blaine Co Sales – YE 2015 by Quarter

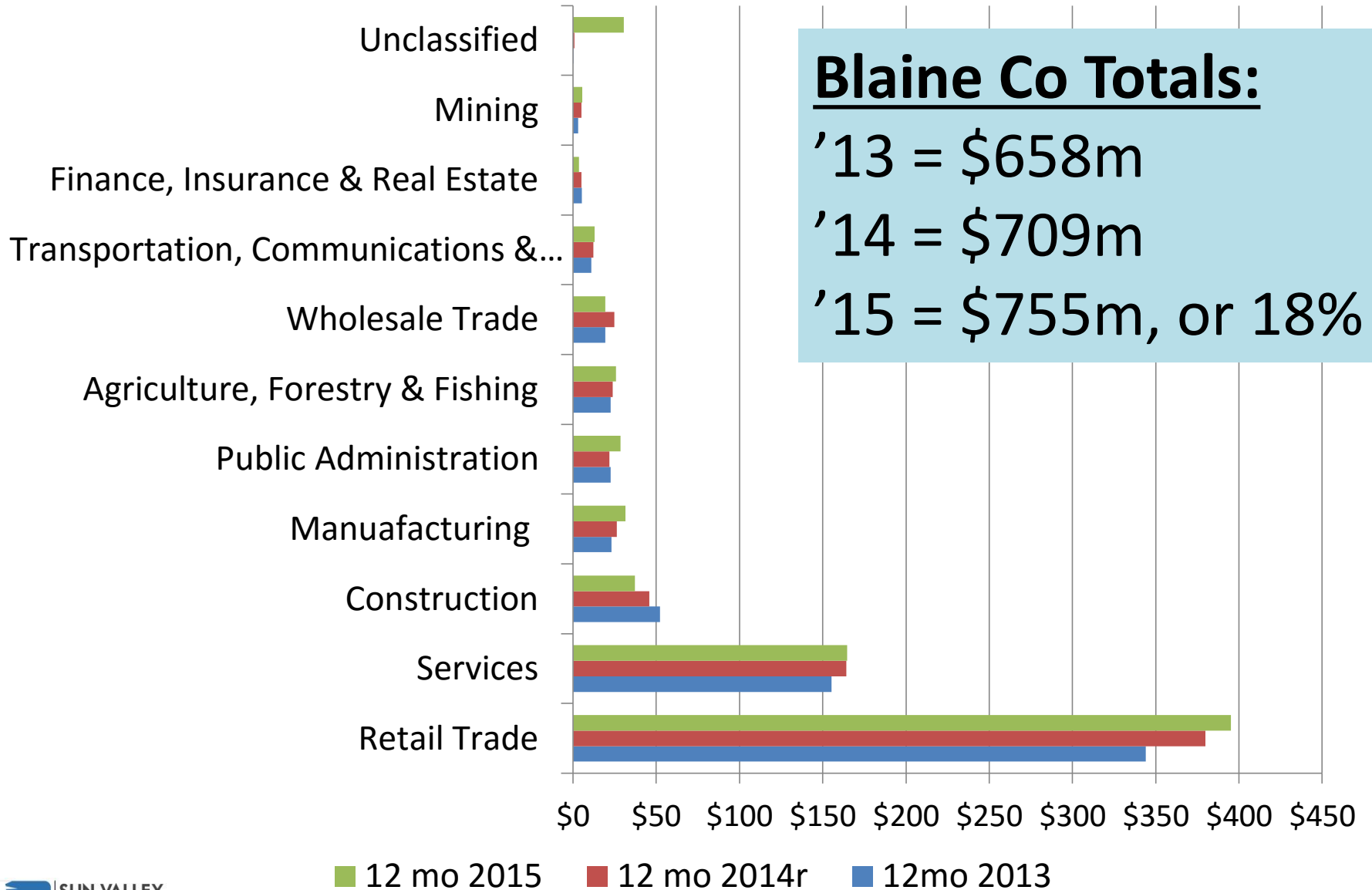
Reported Sales (\$m)



Blaine Co. Sales – Room Nights Sold

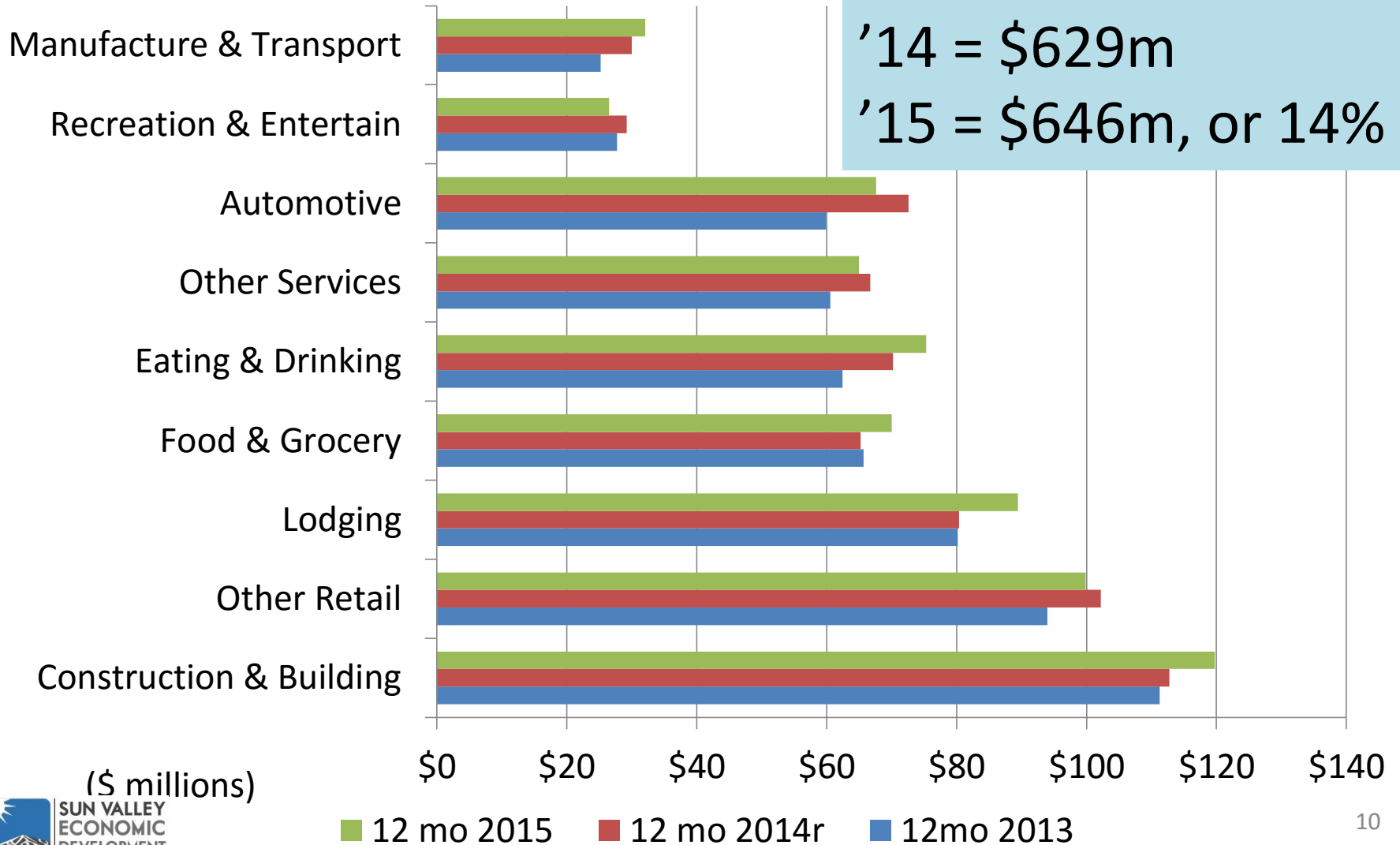


Blaine Co. Sales – Top Level Sectors

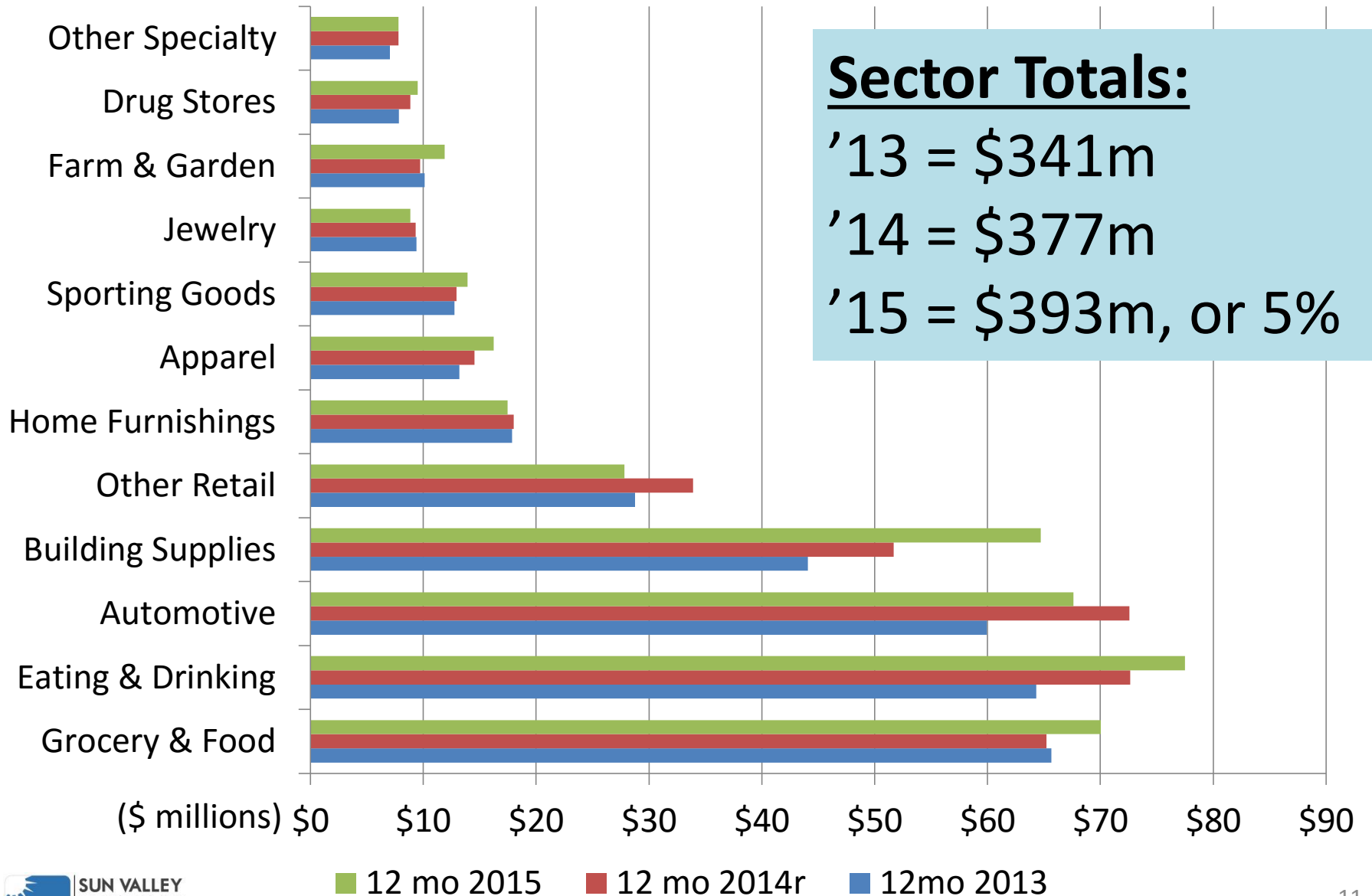


Blaine Co. Sales – Top 10 Clusters

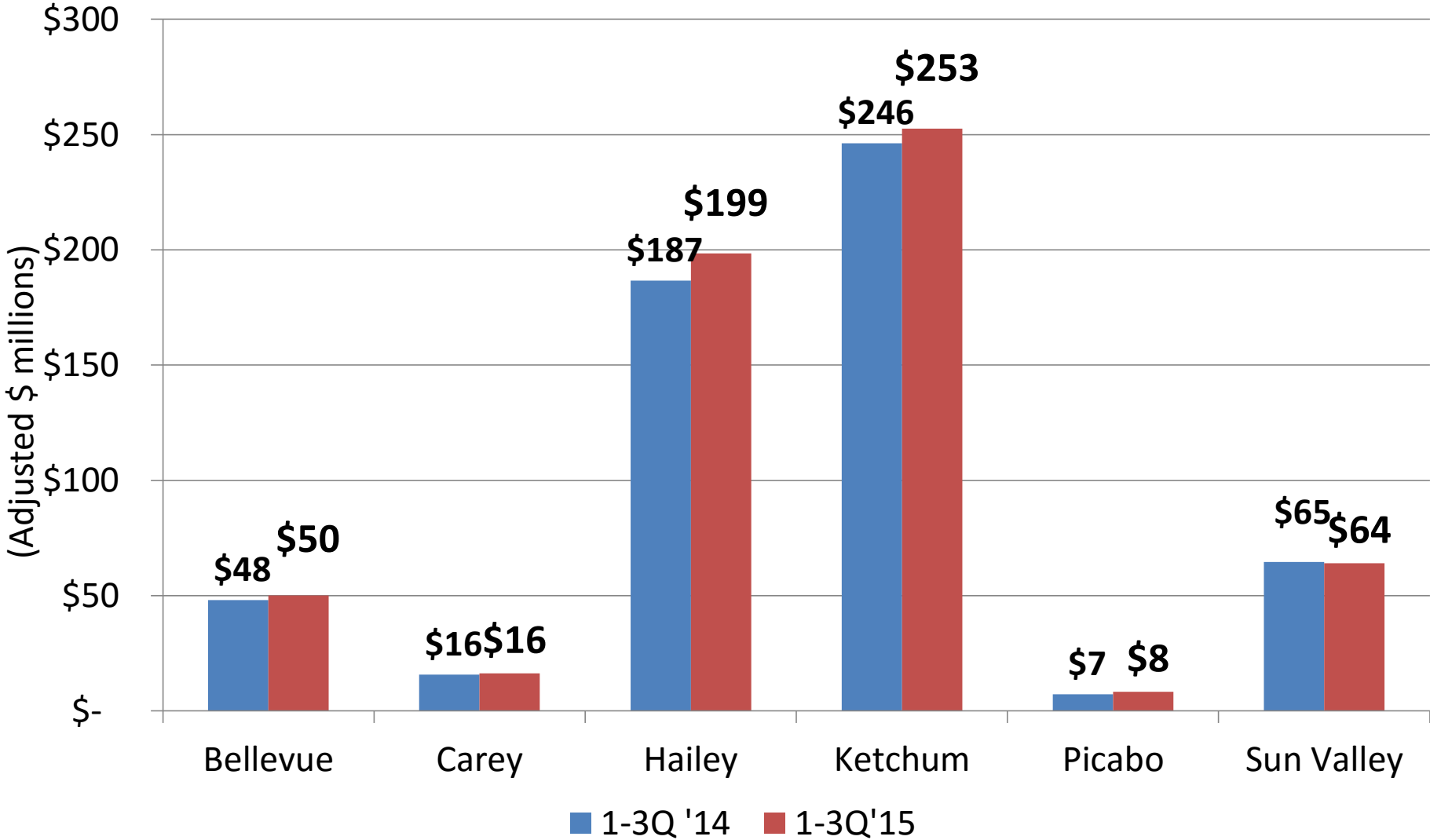
Top 10 Totals:
 '13 = \$586m
 '14 = \$629m
 '15 = \$646m, or 14%



Blaine Co. Sales – Retail Sector



Blaine Co. Sales - By City



DISCUSSION & WRAPUP



**SUN VALLEY
ECONOMIC
DEVELOPMENT**